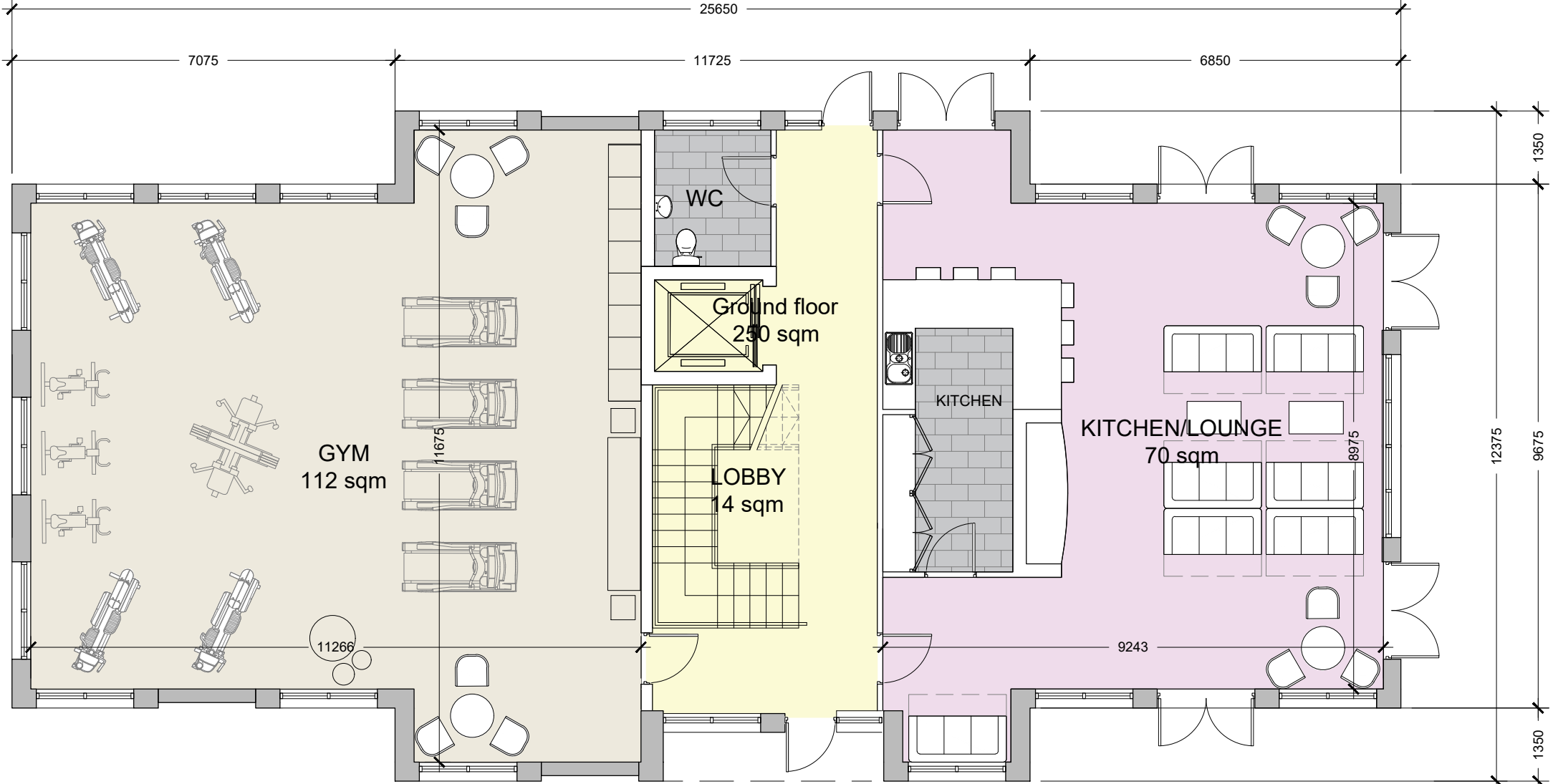
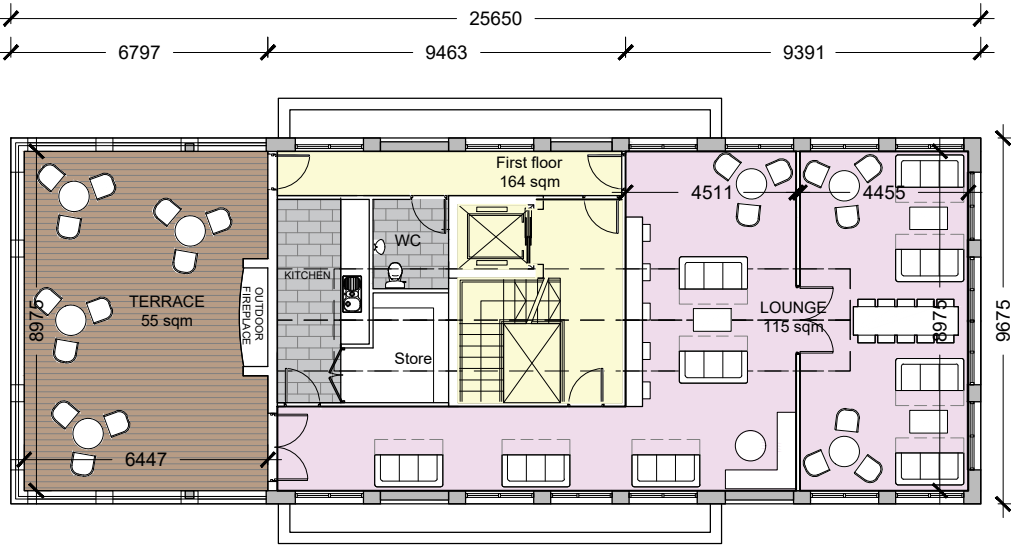


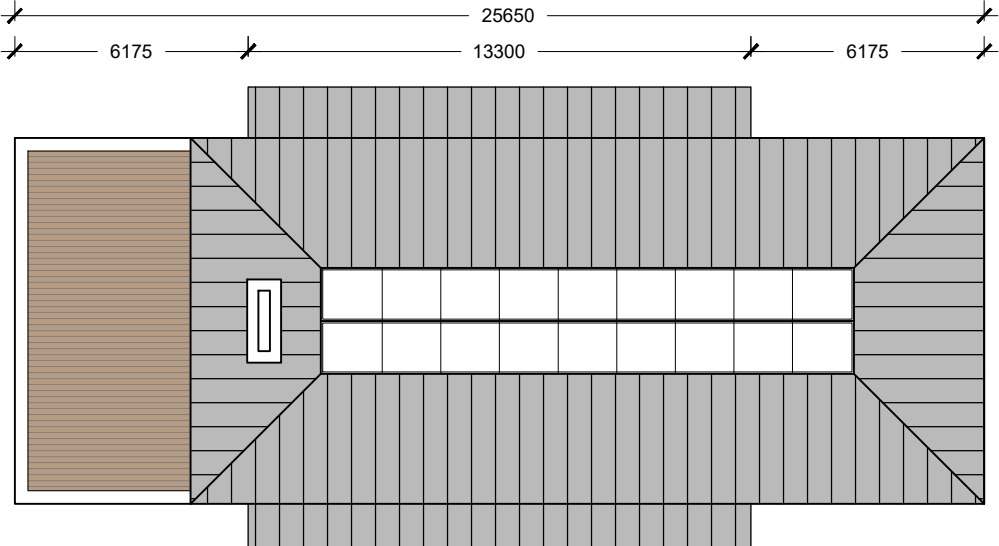
Amenity Block D1



Block D1 - Ground floor plan - 250 SQ.M, Scale 1:100



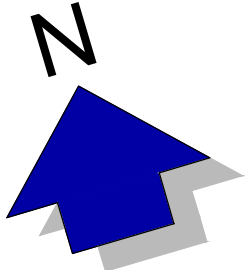
Block D1 - First floor plan - 164 SQ.M, Scale 1:200



Block D1 - Roof floor plan, Scale 1:200

- GENERAL NOTES
1. COPYRIGHT RESERVED
 2. DO NOT SCALE DRAWING USE FIGURED DIMENSIONS ONLY.
 3. ALL DISCREPANCIES TO BE REPORTED TO ARCHITECT.
 4. THE CONTRACTOR IS RESPONSIBLE FOR CHECKING ALL LEVELS AND DIMENSIONS.
 5. ALL STRUCTURE TO BE TO STRUCTURAL ENGINEERS DETAILS.
 6. ALL MECH & ELEC SERVICES TO SERVICES ENGINEERS DETAILS.
 7. ALL PROPRIETARY ITEMS TO BE INSTALLED IN ACCORDANCE WITH MANUFACTURERS INSTRUCTIONS.
 8. CONTRACTOR IS RESPONSIBLE FOR THE COORDINATION OF STRUCTURE FINISHES AND SERVICES.

REV	DATE	DESCRIPTION	BY



JOHN FLEMING ARCHITECTS
 103 LEESON STREET UPPER, DUBLIN 4.
 T: (01) 6689888 E: info@jfa.ie W: www.jfa.ie

CLIENT
 Ardstone Homes Ltd

PROJECT
 Residential Development
 at Scholarstown Road

DRAWING
 Block D1 Floor Plans

SCALE
 Varies @ A3

JOB NO.
 1823

DRAWN BY
 IF

DATE
 November 2019

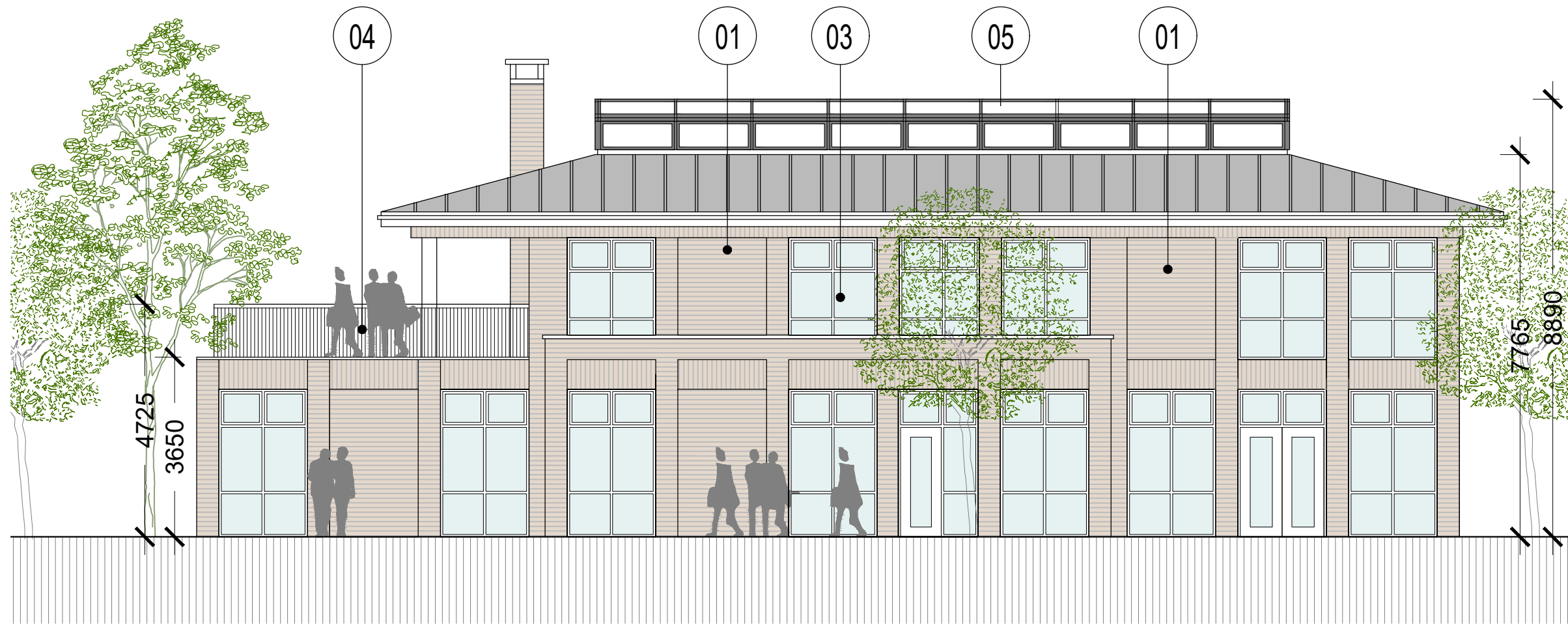
DRAWING NUMBER
 P-PL-CB-01

REVISION
 -

DRAWING LOCATION
 w:\18 jobs\1823\01-planning\11 planning application\11.2.rvt

DRAWING STATUS
 PRE PLANNING

Amenity Block D1



South elevation - Scale 1:100

- GENERAL NOTES
1. COPYRIGHT RESERVED
 2. DO NOT SCALE DRAWING. USE FIGURED DIMENSIONS ONLY.
 3. ALL DISCREPANCIES TO BE REPORTED TO ARCHITECT.
 4. THE CONTRACTOR IS RESPONSIBLE FOR CHECKING ALL LEVELS AND DIMENSIONS.
 5. ALL STRUCTURE TO BE TO STRUCTURAL ENGINEERS DETAILS.
 6. ALL MECH & ELEC SERVICES TO SERVICES ENGINEERS DETAILS.
 7. ALL PROPRIETARY ITEMS TO BE INSTALLED IN ACCORDANCE WITH MANUFACTURERS INSTRUCTIONS.
 8. CONTRACTOR IS RESPONSIBLE FOR THE COORDINATION OF STRUCTURE FINISHES AND SERVICES.

REV	DATE	DESCRIPTION	BY

Materials Legend

- 01 - Selected red/orange brick
- 02 - Render to selected colour
- 03 - Aluminium/uPVC windows to selected colour
- 04 - Balconies with black steel rail and columns
- 05 - Lightweight roof structure



JOHN FLEMING
ARCHITECTS

103 LEESON STREET UPPER, DUBLIN 4.
T: (01) 6689888 E: info@jfa.ie W: www.jfa.ie

CLIENT
Ardstone Homes Ltd

PROJECT
Residential Development
at Scholarstown Road

DRAWING
Block D1 Elevations

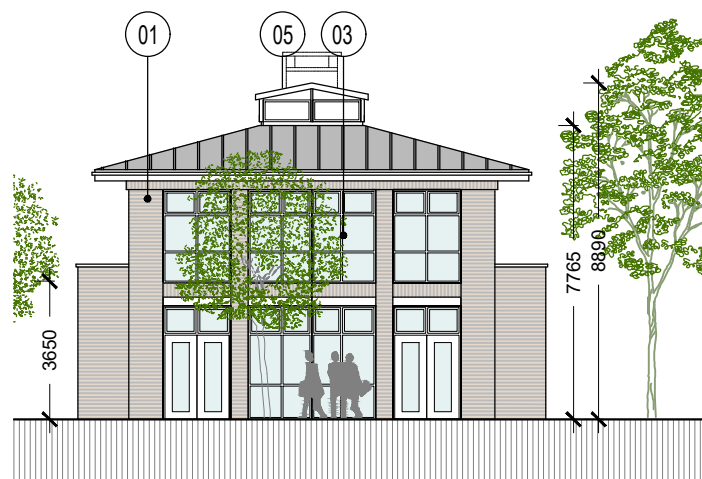
SCALE JOB NO.
Varies @ A3 1823

DRAWN BY IF
DATE November 2019

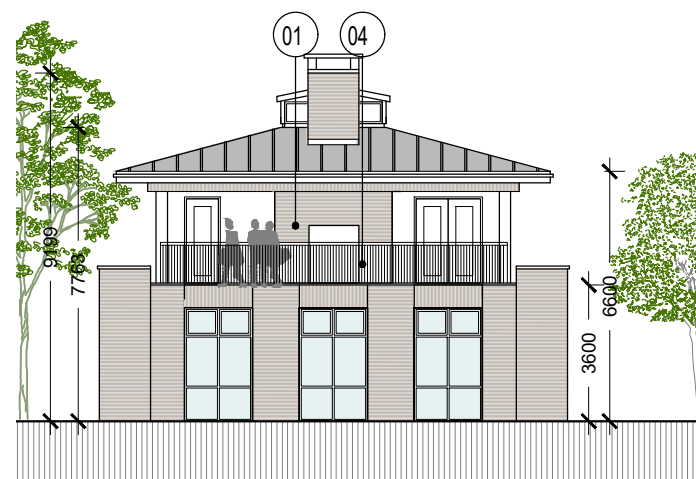
DRAWING NUMBER REVISION
P-EL-CB-01 -

DRAWING LOCATION
e:\18 jobs\1823\03-planning\11 planning application\11.2.rvt

DRAWING STATUS
PRE PLANNING



East elevation - Scale 1:200



West elevation - Scale 1:200

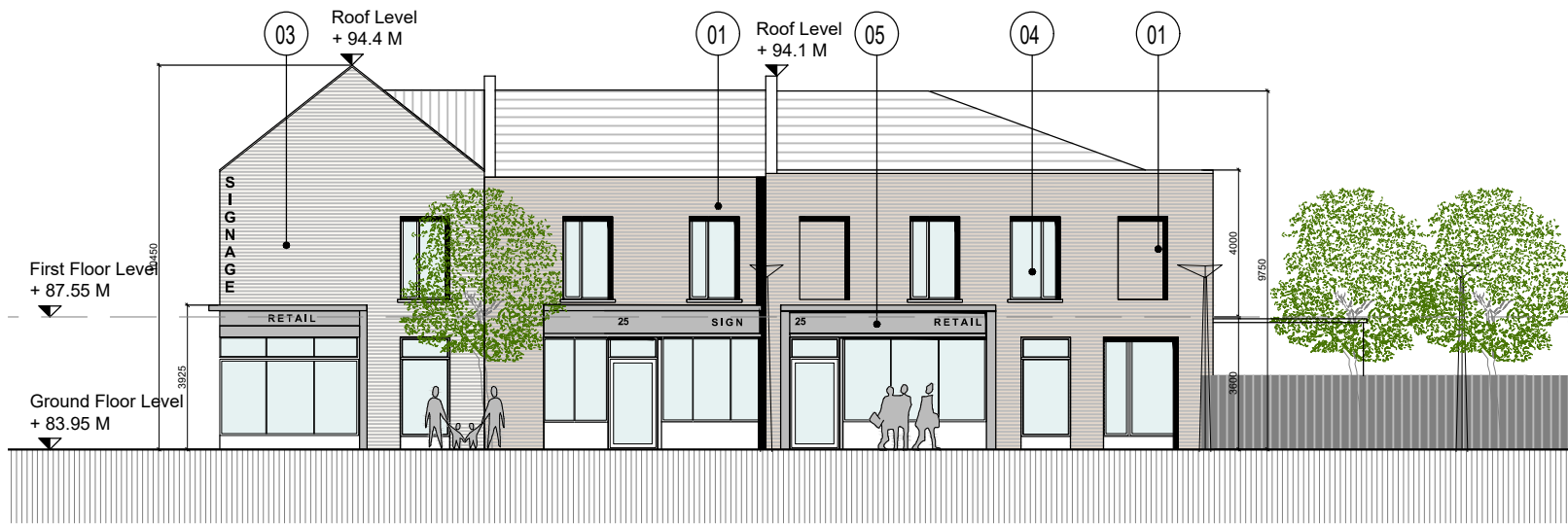


North elevation - Scale 1:200

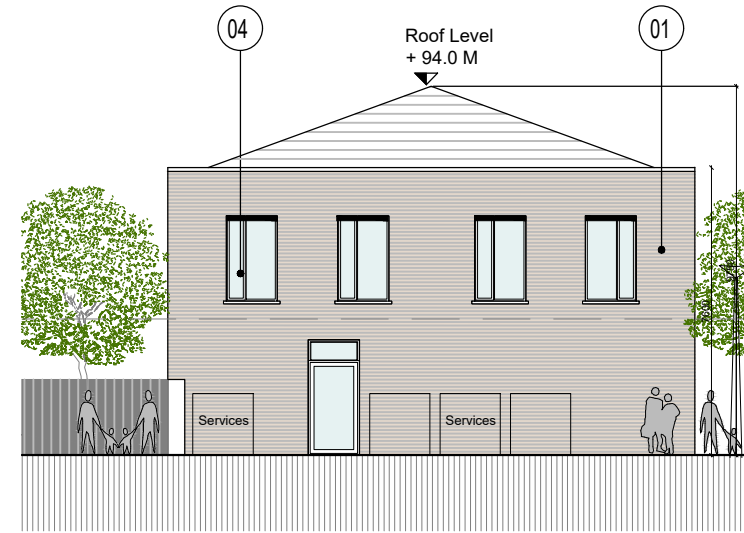
Block D2 - Elevations

- GENERAL NOTES
1. COPYRIGHT RESERVED
 2. DO NOT SCALE DRAWING. USE FIGURED DIMENSIONS ONLY.
 3. ALL DISCREPANCIES TO BE REPORTED TO ARCHITECT.
 4. THE CONTRACTOR IS RESPONSIBLE FOR CHECKING ALL LEVELS AND DIMENSIONS.
 5. ALL STRUCTURE TO BE TO STRUCTURAL ENGINEERS DETAILS.
 6. ALL MECH & ELEC SERVICES TO SERVICES ENGINEERS DETAILS.
 7. ALL PROPRIETARY ITEMS TO BE INSTALLED IN ACCORDANCE WITH MANUFACTURERS INSTRUCTIONS.
 8. CONTRACTOR IS RESPONSIBLE FOR THE COORDINATION OF STRUCTURE FINISHES AND SERVICES.

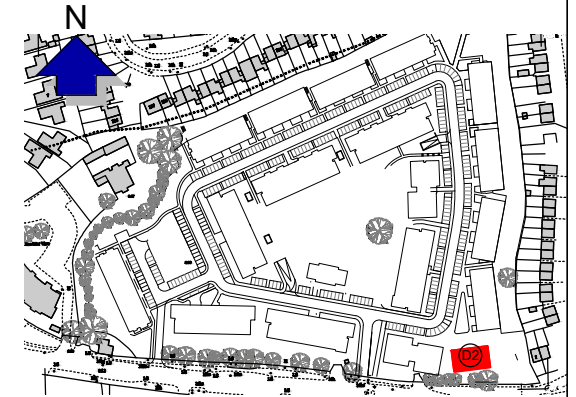
REV	DATE	DESCRIPTION	BY
A	23.4.19	Block reduced	



Block D2 - South Elevation



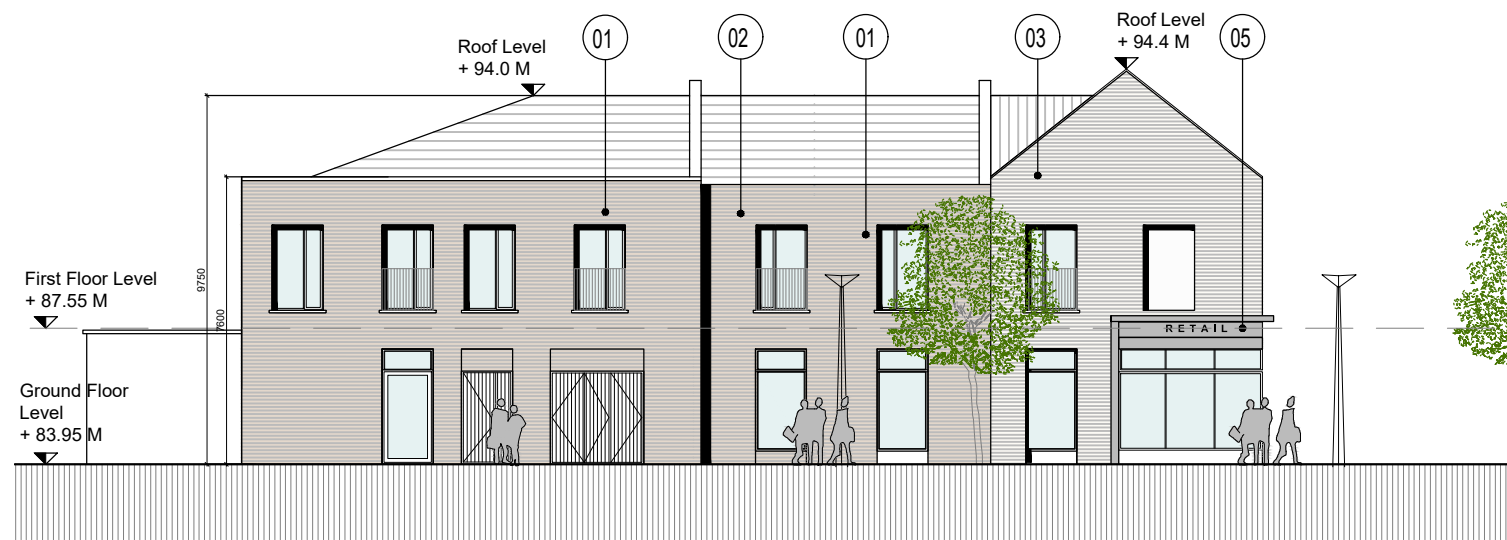
Block D2 - East Elevation



Keyplan | Scale 1:5000 @A3

Materials Legend

- 01 - Selected red/orange brick
- 02 - Brick to selected colour
- 03 - Render to selected colour
- 04 - Aluminium/uPVC windows to selected colour
- 05 - Aluminium/uPVC Frame to selected colour



Block D2 - North Elevation



Block D2 - West Elevation



JOHN FLEMING ARCHITECTS

103 LEESON STREET UPPER, DUBLIN 4.
T: (01) 6689888 E: info@jfa.ie W: www.jfa.ie

CLIENT
Ardstone Homes Ltd

PROJECT
Residential Development
at Scholarstown Road

DRAWING
Retail Block D2
Floor Plans + Elevations

SCALE 1:200 @ A3 JOB NO. 1823

DRAWN BY IF DATE November 2019

DRAWING NUMBER P-EL-D2-01 REVISION

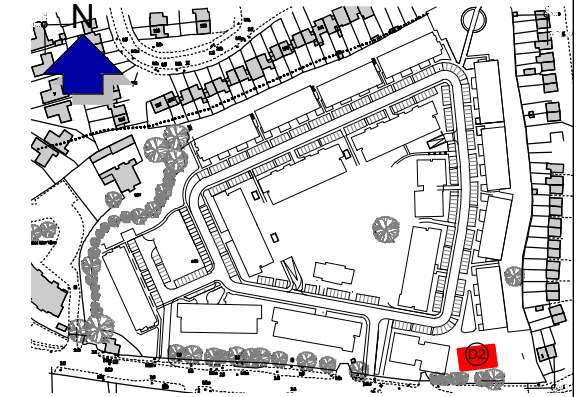
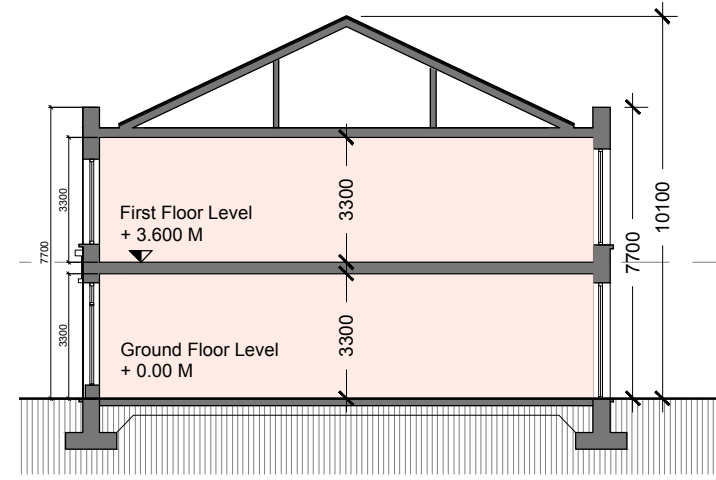
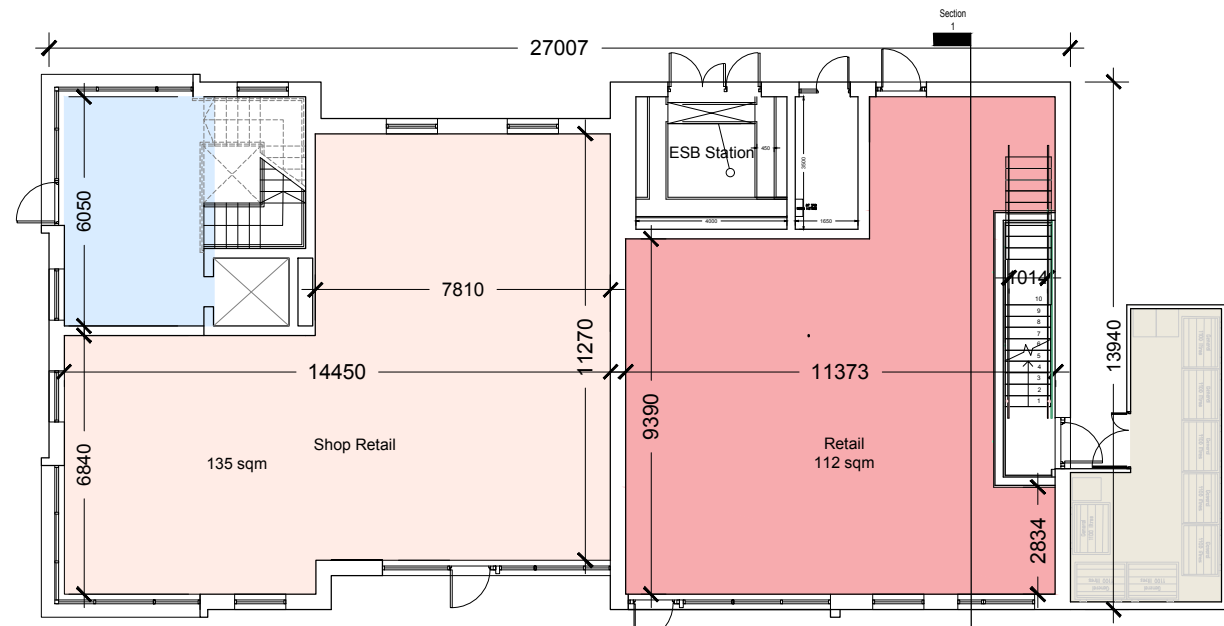
DRAWING LOCATION
w:\18_john\1823-john\11_planning_applications\12.dwg

DRAWING STATUS
Planning

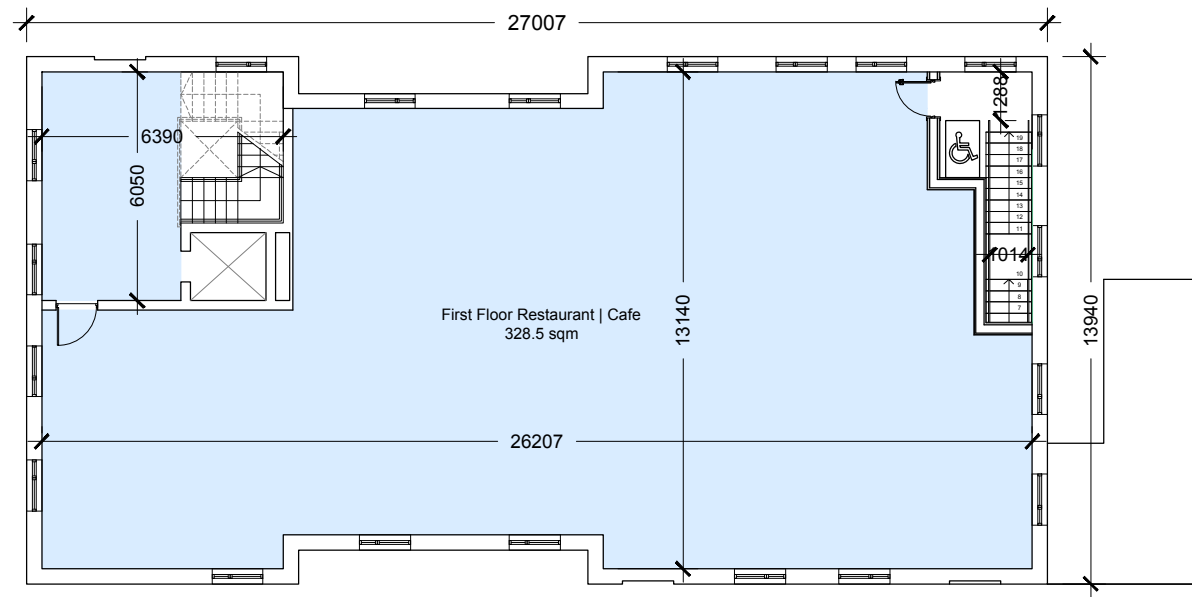
Block D2 - Plans

- GENERAL NOTES
1. COPYRIGHT RESERVED
 2. DO NOT SCALE DRAWING. USE FIGURED DIMENSIONS ONLY.
 3. ALL DISCREPANCIES TO BE REPORTED TO ARCHITECT.
 4. THE CONTRACTOR IS RESPONSIBLE FOR CHECKING ALL LEVELS AND DIMENSIONS.
 5. ALL STRUCTURE TO BE TO STRUCTURAL ENGINEERS DETAILS.
 6. ALL MECH & ELEC SERVICES TO SERVICES ENGINEERS DETAILS.
 7. ALL PROPRIETARY ITEMS TO BE INSTALLED IN ACCORDANCE WITH MANUFACTURERS INSTRUCTIONS.
 8. CONTRACTOR IS RESPONSIBLE FOR THE COORDINATION OF STRUCTURE FINISHES AND SERVICES.

REV	DATE	DESCRIPTION	BY
A	23.4.19	Block reduced	



Block D2 - Ground floor plan



Block D2 - First floor plan

JOHN FLEMING ARCHITECTS
 103 LEESON STREET UPPER, DUBLIN 4.
 T: (01) 6689888 E: info@jfa.ie W: www.jfa.ie

CLIENT
Ardstone Homes Ltd

PROJECT
Residential Development
at Scholarstown Road

DRAWING
Retail Block D2
Floor Plans & Section

SCALE 1:200 @ A3 JOB NO. 1823

DRAWN BY IF

DATE November 2019

DRAWING NUMBER P-PL-D2-00 REVISION

DRAWING LOCATION

DRAWING STATUS	Planning
----------------	----------